

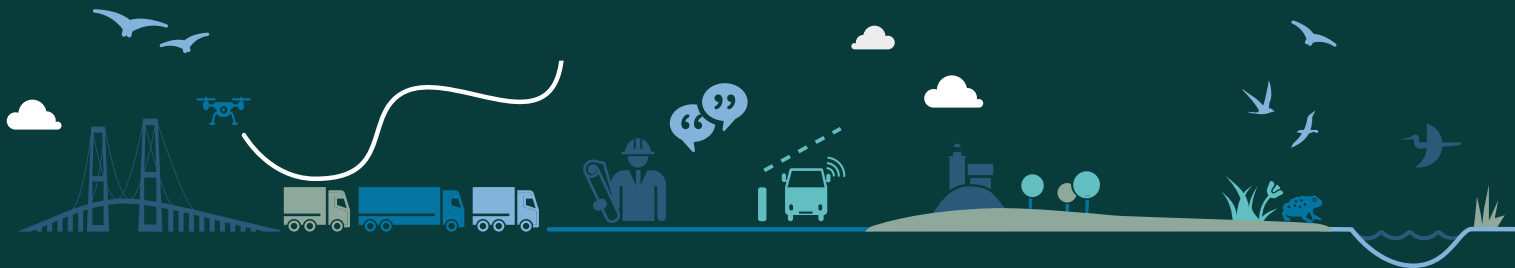


Brobizz

Montering af Vejafgift Boks

Installation guide for Toll Box

Version 1.0



Monteringsvejledning af Brobizz Vejafgift Boks

Efter udførelsen af alle trin i monteringsvejledningen startes boksen ved tilslutning af strømkablet.

Er du i tvivl om, hvordan du skal montere Vejafgift Boksen, efter du har gennemgået monteringsvejledningen, kan du scanne nedenstående QR kode og læse mere eller få hjælp.

Installation guide for Toll Box

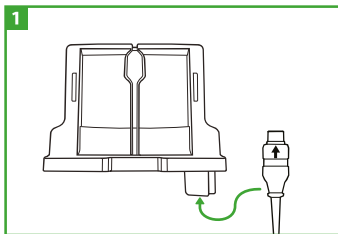
After completing all the steps in the installation guide, start the box by connecting the power cable.

If you are in doubt about how to install the Toll Box after you have gone through the installation instructions, you can scan the QR code below and read more or get help.

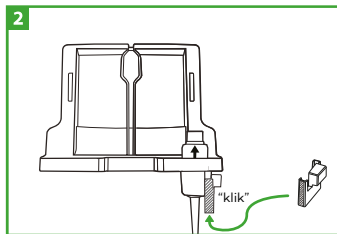


Read more about
Brobizz toll road box
www.brobizz.com/gnss

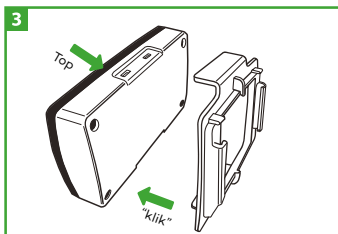
Klargøring af boks til montering



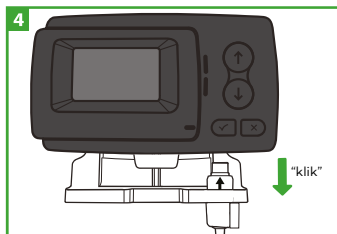
Før kablet op i bunden af holderen. Vær opmærksom på at kablet vender korrekt med pilen og sidder lige, inden du går til step 2.



Fastgør den medfølgende plast clips mellem kabel og holder. Vær opmærksom på at montere den lige, inden den klikkes fast, da den herefter er låst.

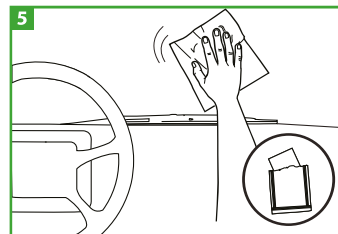


Montér beslaget på bagsiden af boksen. Vær OBS på at vende beslaget rigtigt (se på hakkerne i beslag og boks), da den er svær at skille ad.

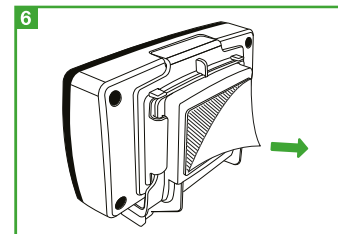


Montér boksen (med beslag på bagsiden) ned i holderen til den siger 'klik'.

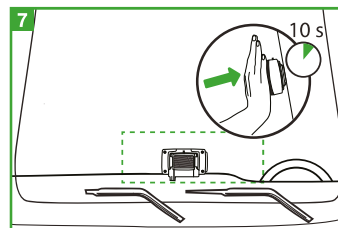
Montering i køretøjet



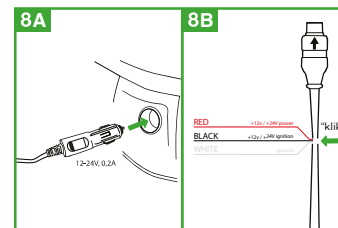
Aftør grundigt ruden med den medsendte klud.



Træk papiret af klæberen på bagsiden.



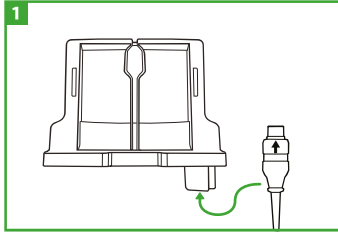
Montér nederst på forruden og tryk i 10 sek. for at fastgøre boksen.



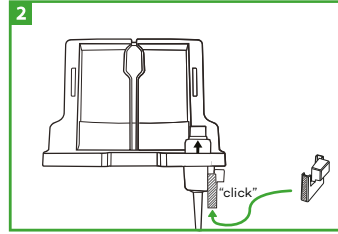
Tilslut strøm på 2 måder:

- 8A Tilslut det medfølgende strømkabel til bilens cigarettænderstik.
- 8B Tilslutning direkte til køretøjet. Se brugervejledning for guide

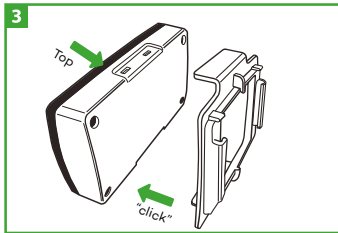
Prepare docking station



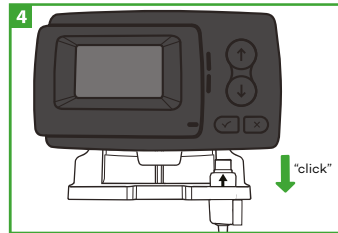
Feed the cable up through the bottom of the holder. Make sure the cable is oriented correctly with the arrow and is straight before proceeding to step 2.



Attach the provided plastic clip between the cable and the holder. Ensure it is mounted straight before clicking it into place, as it will be locked afterward.

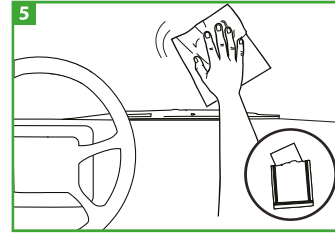


Mount the bracket on the back of the box. Be careful to position the bracket correctly (align the notches on the bracket and the box), as it is difficult to separate once assembled.

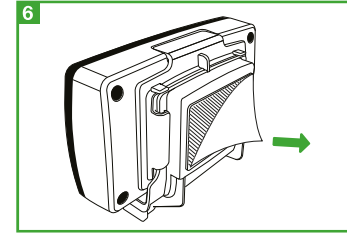


Mount the box (with the bracket on the back) onto the holder until you hear a 'click'.

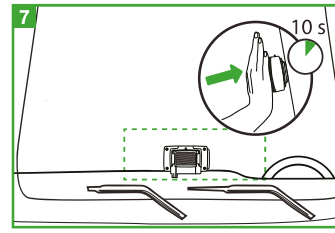
Installation in vehicle



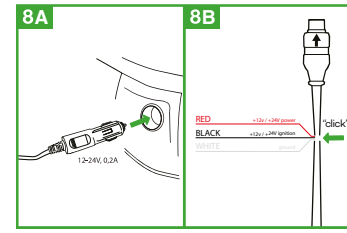
Thoroughly wipe the window with the provided cloth.



Peel off the paper backing from the adhesive.



Mount at the bottom of the window and press for 10 seconds to secure the box.



Connect the power in two ways:

- 8A Connect the provided power cable to the vehicle's cigarette lighter socket.
- 8B Direct connection to the vehicle. See operating manual for guide

Vigtigt når du monterer Brobizz Vejafgift Boks

Boksen skal til enhver tid være tilsluttet strømkilden, og “+” vises på skærmen. Når boksen lyser grønt kan turen startes.

For trafiksikkerheden og din sikkerheds skyld skal du kun interagere med Vejafgift Boksen når køretøjet er standset. Knapperne fungerer ikke ved hastigheder over 5 km/t.

Er du i tvivl om montering eller har andre spørgsmål til Vejafgift Boksen, kan du scanne nedenstående QR kode og læse mere eller få hjælp.

Important when installing the Brobizz Toll Box

The box must be connected to the power source at all times, and the “+” should be displayed on the screen. When the box lights up green, the trip can begin.

For traffic safety and your own safety, you should only interact with the Toll Box when the vehicle is stopped. The buttons do not work at speeds above 5 km/h.

If you are unsure about how to install the Toll Box after reviewing the installation guide, you can scan the QR code below to read more or get help.



Read more about
Brobizz toll road box
www.brobizz.com/gnss